



Property
Services

The background of the slide is a photograph of a multi-story building with a prominent balcony. The balcony has a dark metal railing and is supported by ornate cast-iron brackets. The building's facade is made of light-colored stone or brick. The image is partially obscured by a blue gradient overlay at the bottom, where the title text is located.

Primary Care Premises Forum

Who we are

NHS Property Services brings property and facilities management expertise to our primary care portfolio

We act as both landlord and service provider

We are reducing costs, creating a more fit for purpose estate and generating vital funds that are reinvested back directly into the estate

**3000
properties**

**537 professional/
3,204 service
delivery people**

7,000 tenants

**3.2m GIA
2.6m NIA**

**c.10% of
the NHS
estate**

**Over £3bn
asset value**

Our properties

We manage a large, mixed use estate delivering primary care services across England

Our properties include:

- 1800 health centres, GP surgeries and clinics
- 300 community hospitals
- Almost 450 offices
- Over 70 nursing/care homes



Health hubs



GP surgeries

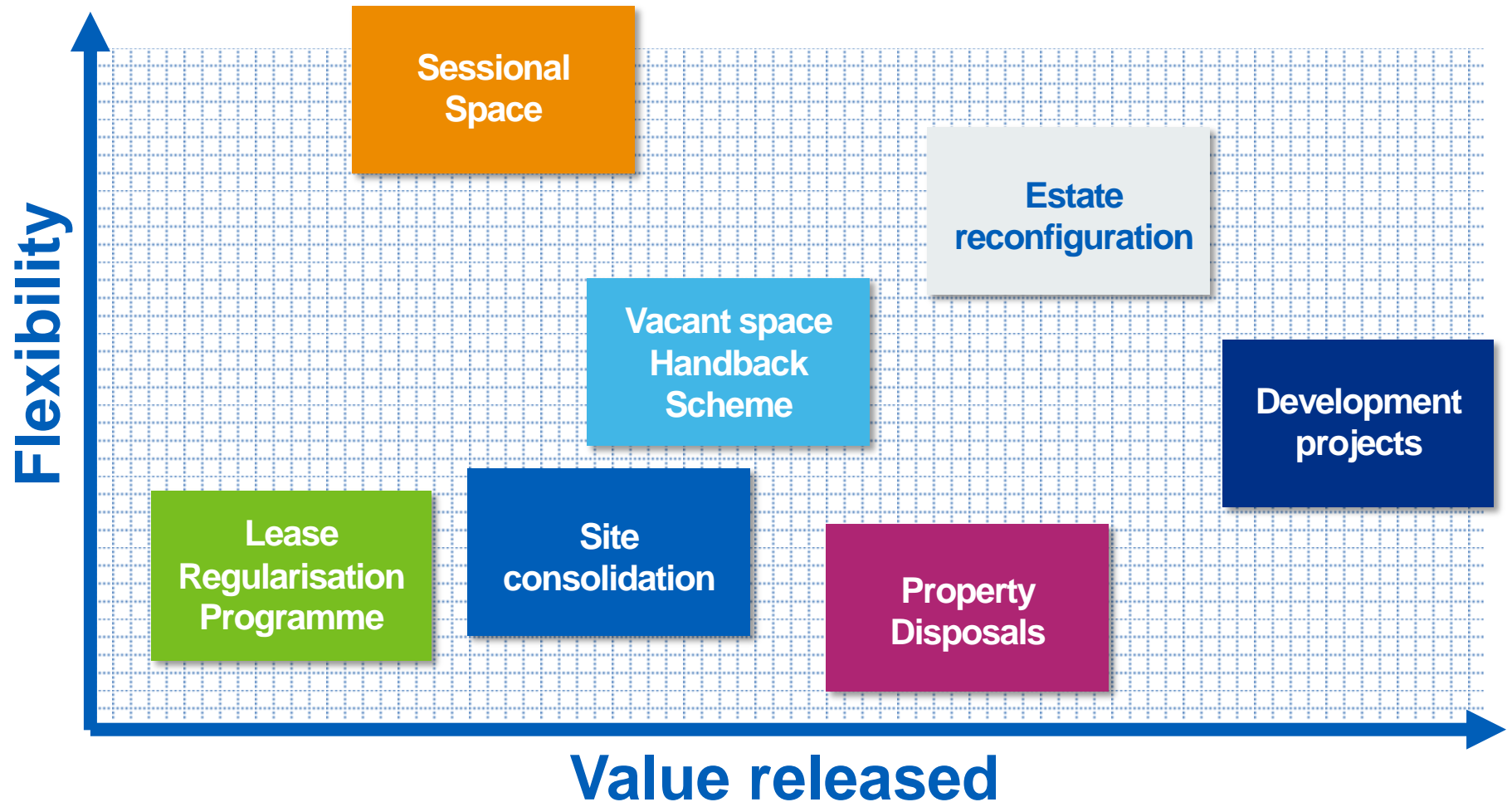


Community hospitals



Health centres

Improving NHS space utilisation

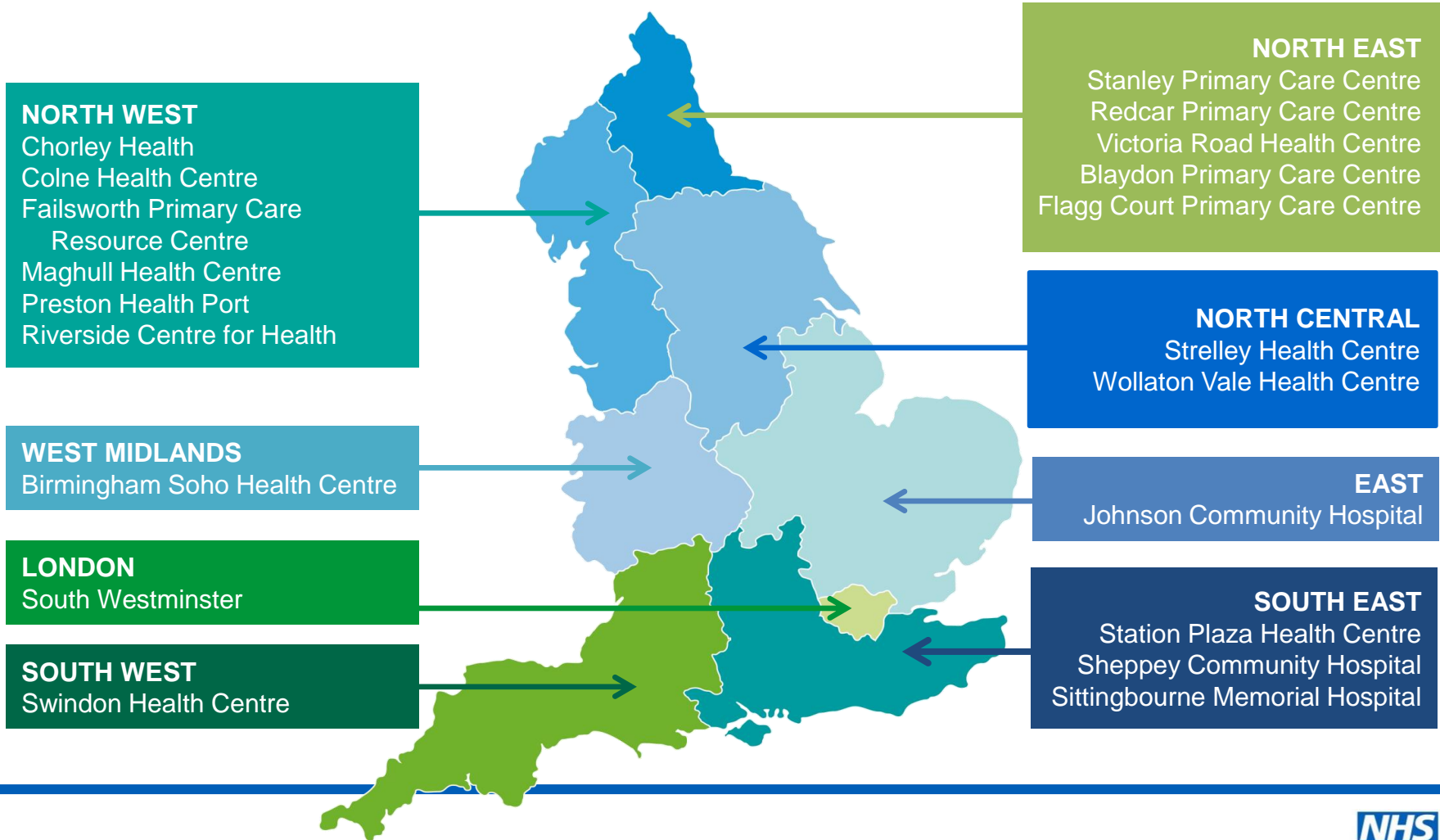


Vacant space handback scheme

- Introduced scheme to help commissioners cut the cost of empty space in buildings, leaving more to spend on frontline care
- One of a number of initiatives NHSPS is leading to improve space utilisation and reduce costs of the NHS estate
- Endorsed by the DH and NHS England



Sessional space: pilot locations



Development pipeline

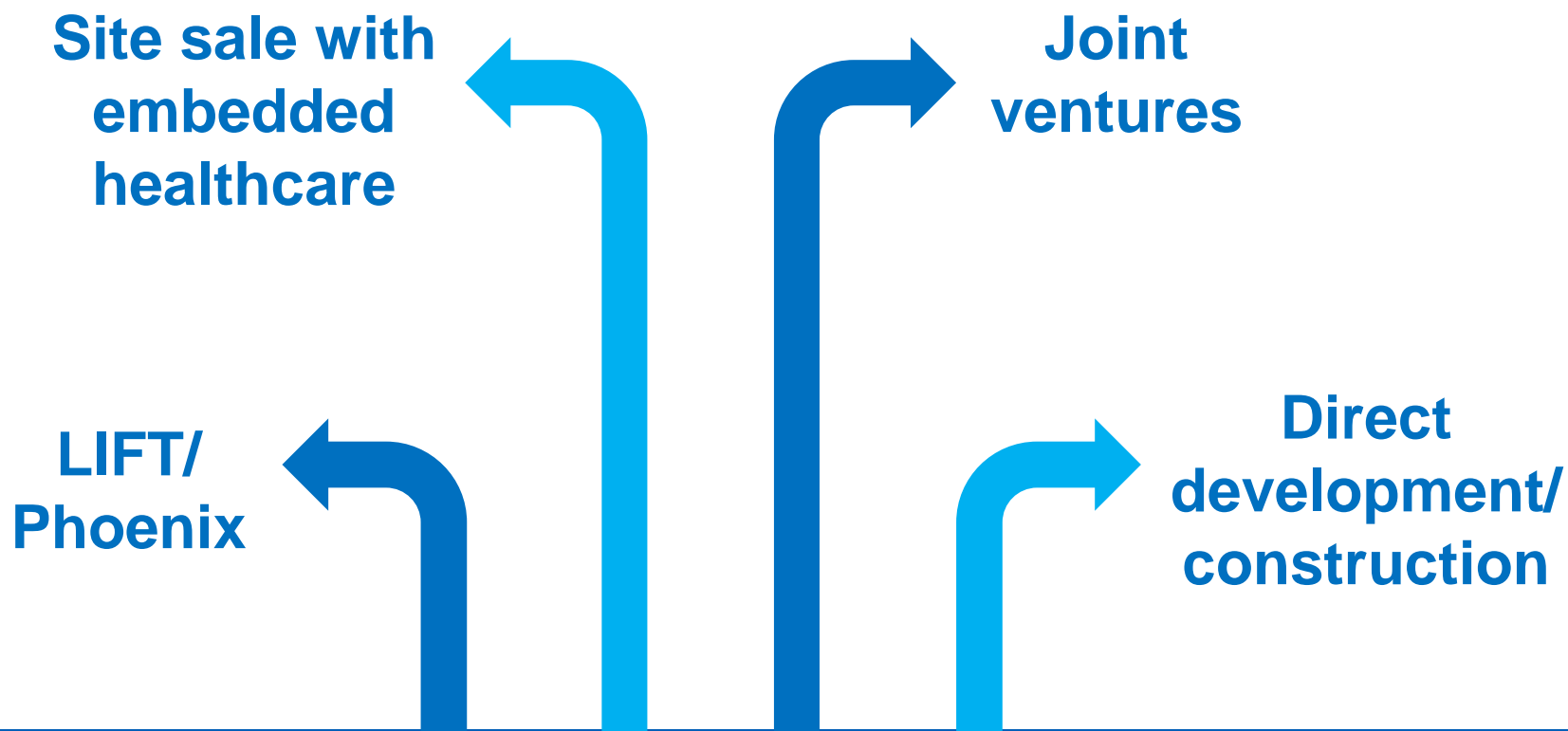
Initial analysis of NHSPS pipeline shows the scale of potential opportunity:

234,000 sqm
site area

£85M
pipeline value

1060
Housing units

Delivery routes

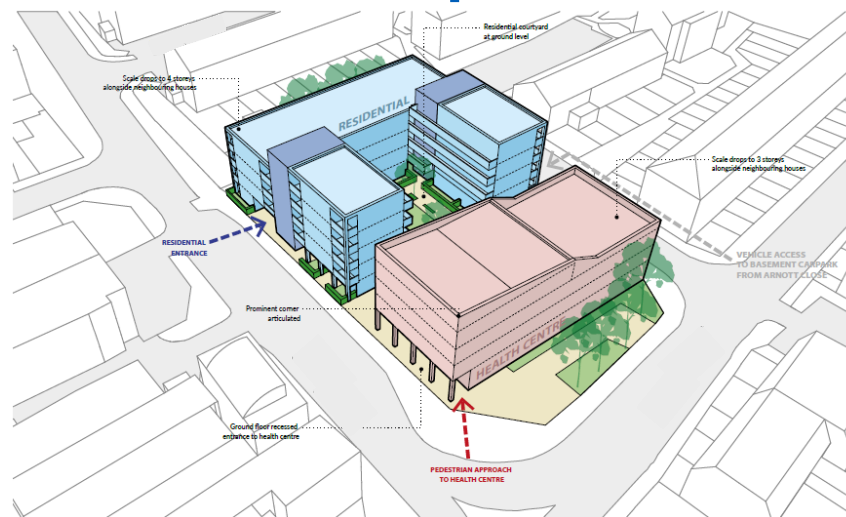


Example development

Current use

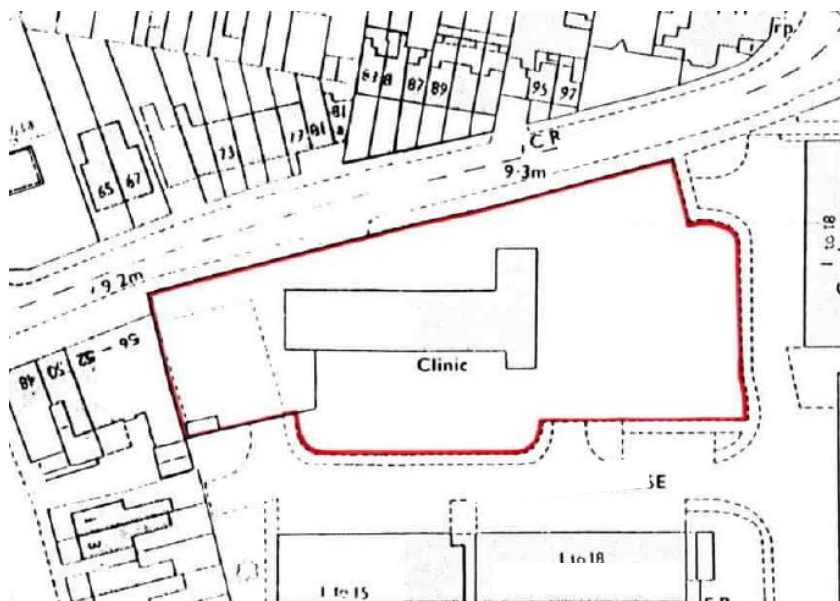


Development

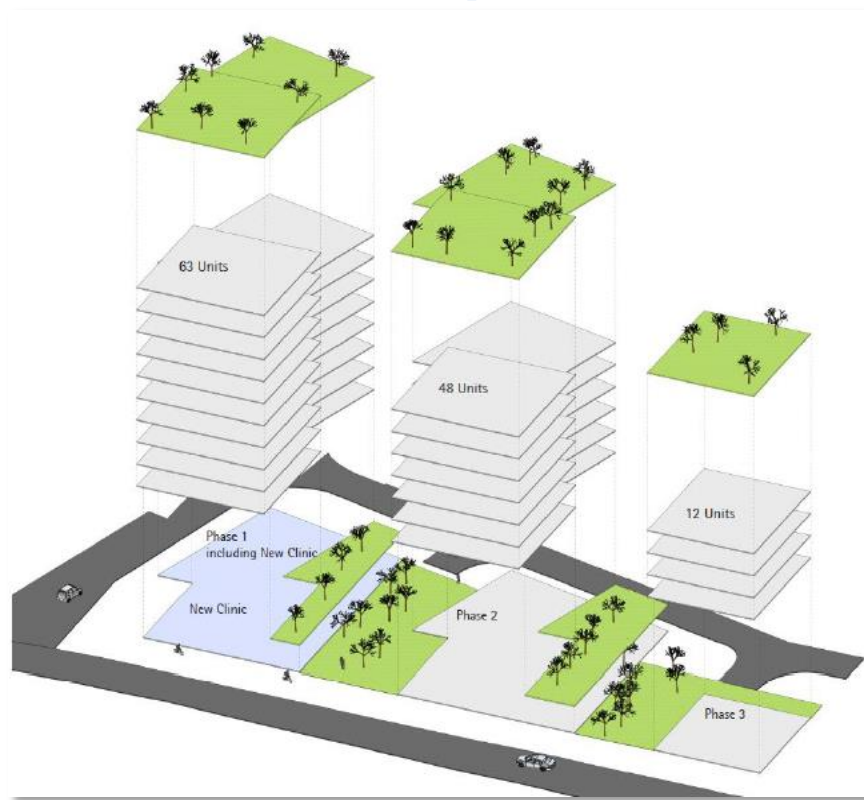


Example development

Current use



Development



Constraints

- Shareholder controls
- Procurement
- Capital
- Resources
- Balance sheet
- Speculative development