



HEALTHCARE KNOW HOW



Nigel Grinstead

CEO

Open Junction

CEO

Pier Health Group

Agenda:

- Market pressures
- New models of
Primary Care:
Working at Scale
- Building the Future

Market Pressures



Market Pressures

- Size of general practice - a risk?
- Too much work
- Practice failures
- Legislation and compliance
- Increasing costs
- Duplication of back office
- Locums
- Recruitment
- Succession planning
- Property
- Ability to cope with complex change
- Deliver and benefit from new GP contract/PCNs

New Models of Primary Care: Working at Scale



New Models of Primary Care: Working at Scale

- Federations, LLCs, LLPs...
- Informal
- Takeover, Merger
- Primary Care Networks
- Super Practice
- Super Partnership...

New Models of Primary Care:

Super Partnership

- Between like and unlike practices
- Menu of integration
- Many different models
- Autonomy, individual contracts remain
- Lifestyle and earnings differentials
- Elected board, executives run day to day
- Relationship with provider company
- Economies of scale derived from menu;
- VAT efficient
- Control with partners.



www.pierhealth.co.uk

**A coalition
of the willing**



This is enshrined in our Partnership Deed

Pier Health Group



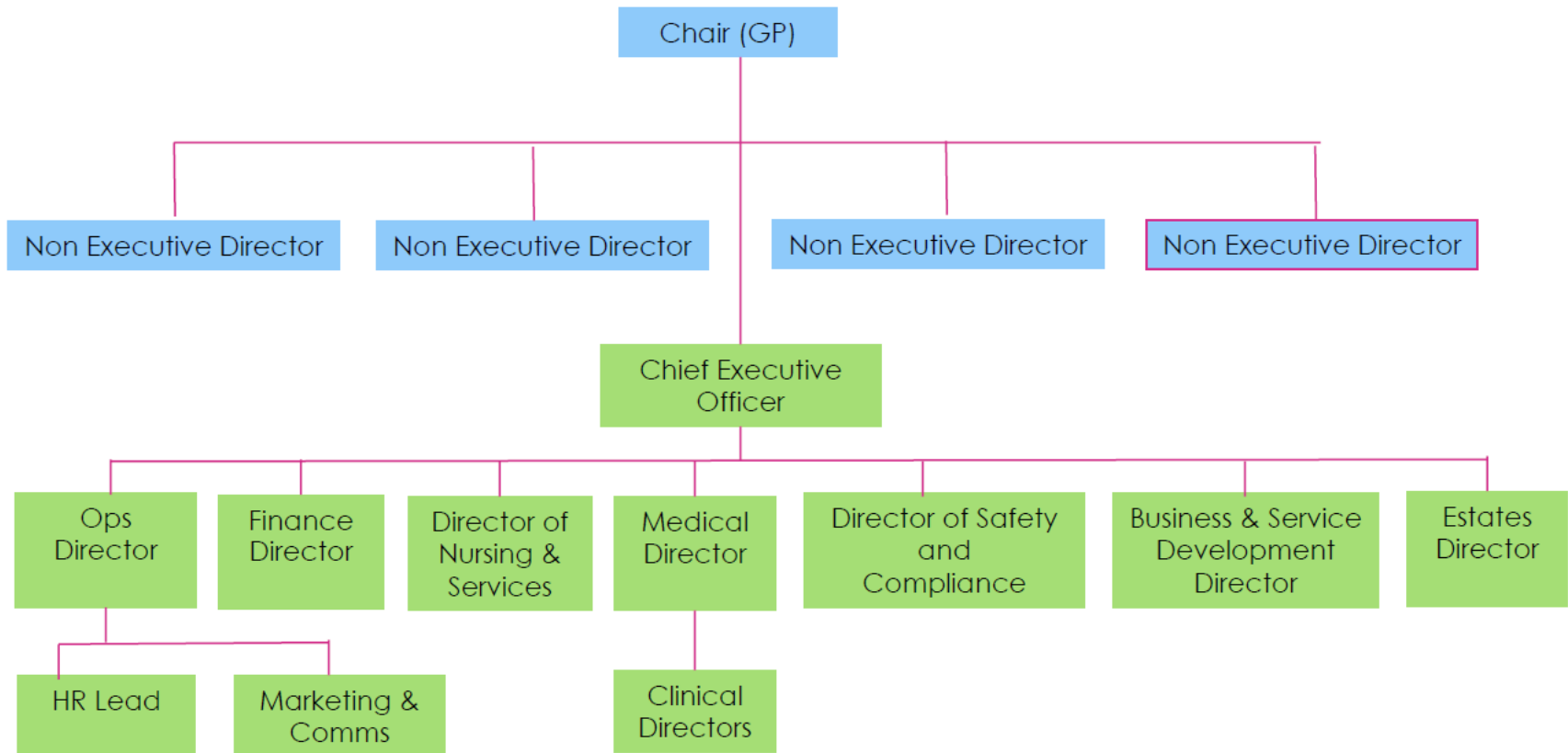
100,000 patients, 40 partners

www.pierhealth.co.uk

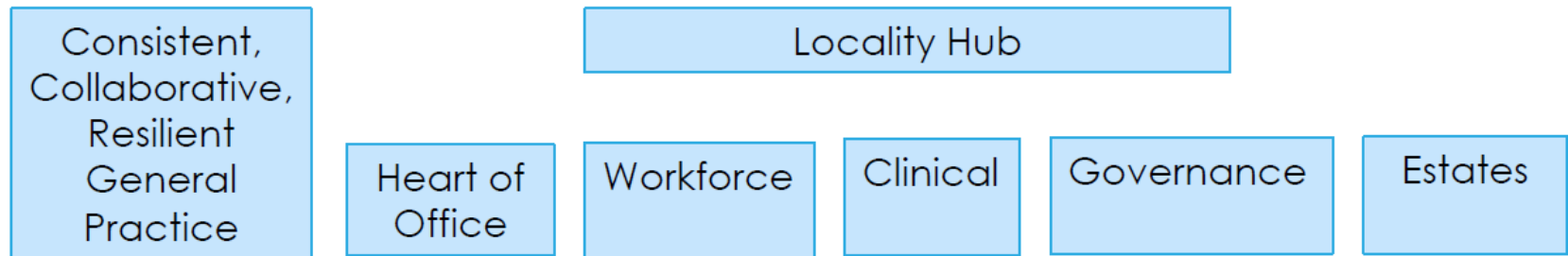
Our Vision

To create consistent, collaborative and resilient general practice leading our partners in the local health and care system, where community is the default setting for all our patients.

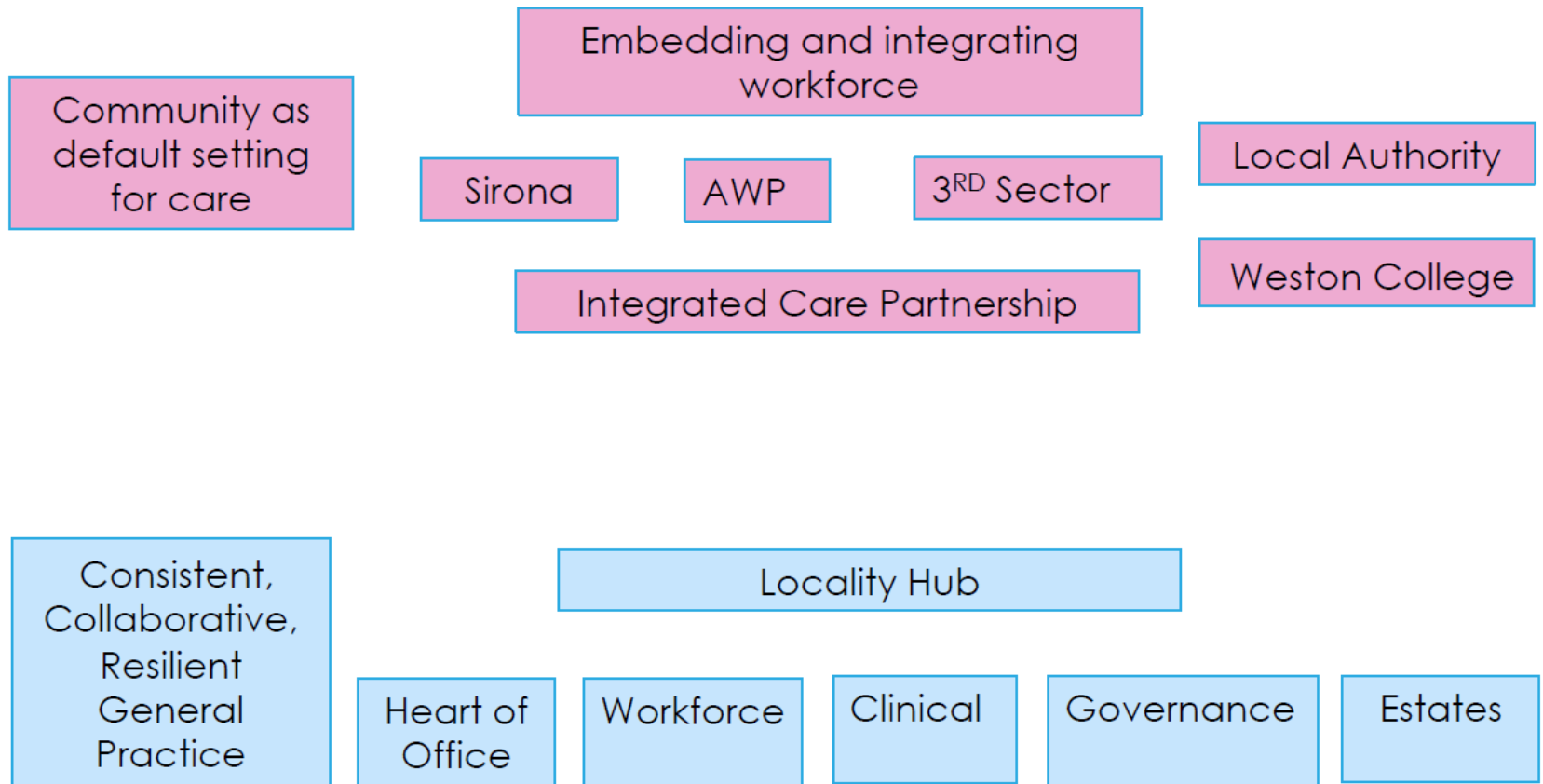
Organisational Structure



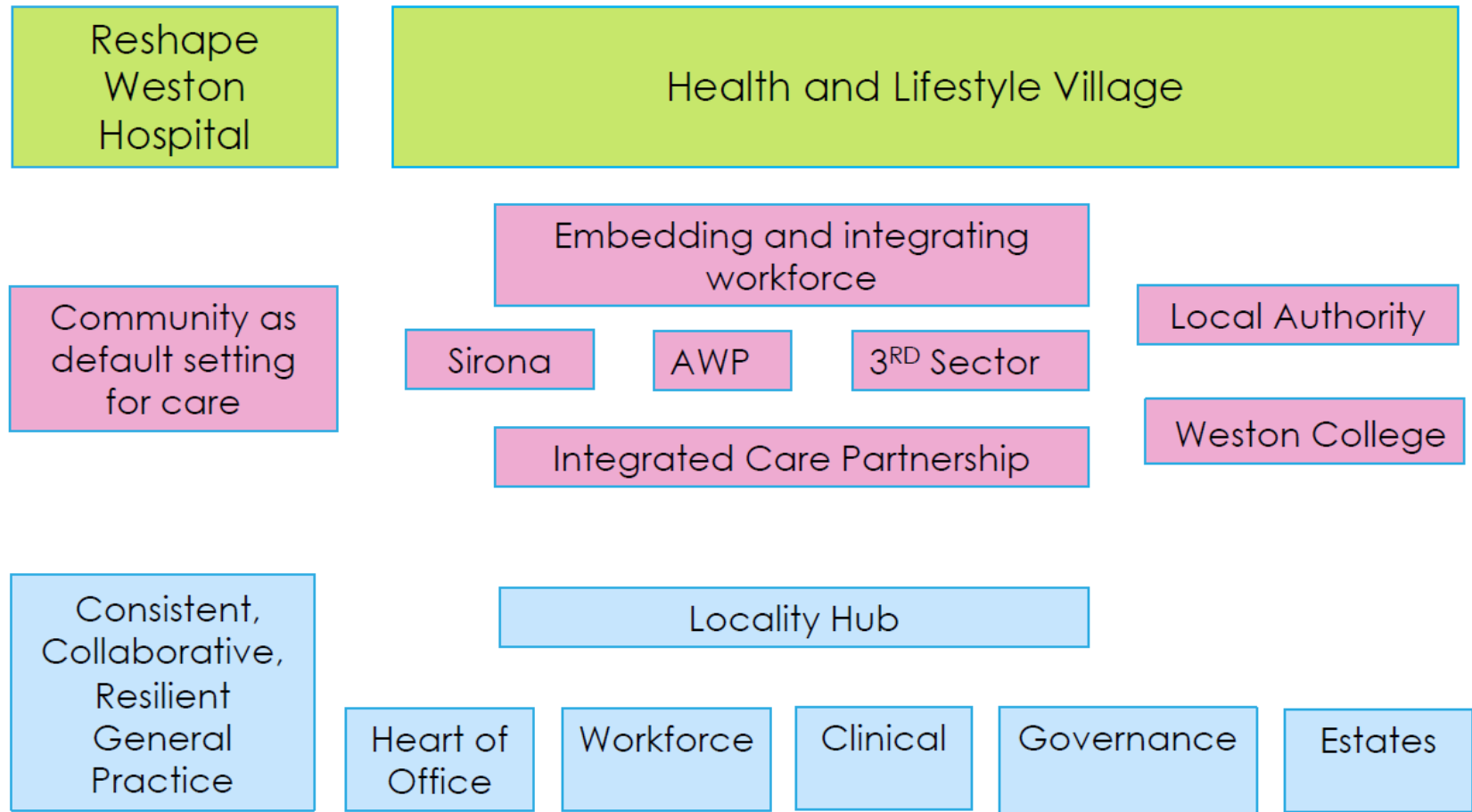
Pier Health – the next 3 years



Pier Health – the next 3 years



Pier Health – the next 3 years



Pier Health: The first few months

We have:

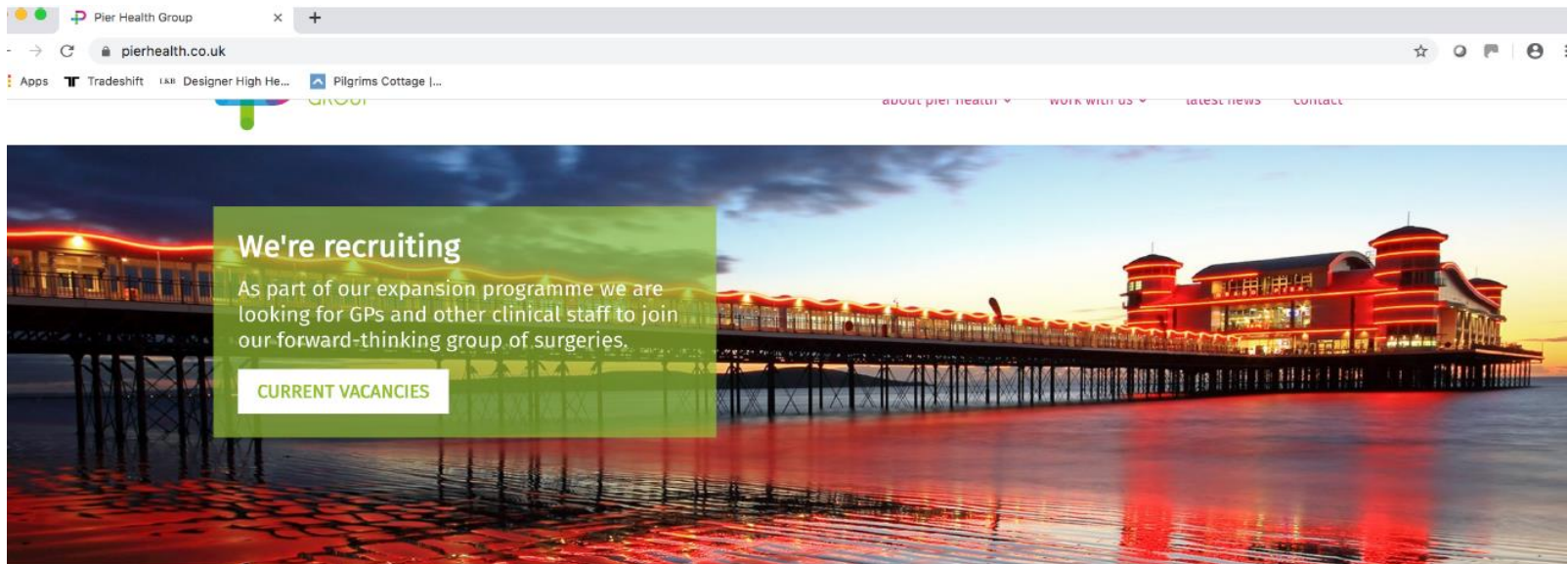
- Rescued 3 practices
- Delivered co-terminus PCN
- Established our 'Heart of Office'
- Become a research centre
- Recruited GPs, ANPs, ECPs...
- Launched our Prescribing Hub, e consults, Nurse-led practice & are ready for 7 day opening.

Creating a buzz



Pier Health website

www.pierhealth.co.uk



About our super partnership

Pier Health Group was established in 2019 with the express purpose of delivering the very best in care for our patients by continuously improving our service in innovative ways. One of the many benefits of forming an organisation that will provide care for over 93,000 people is that Pier Health will be able to offer robust, high quality, and consistent services across its organisation and can explore new ways of delivering care across the sites.

Our surgeries

Pier Health is a super partnership of surgeries across Weston-super-Mare, Worle and surrounding villages. Whilst Pier Health is a super partnership, each surgery has a significant amount of local autonomy to ensure they are well equipped to meet the needs of their own patient group.

www.pierhealth.co.uk

Social Media

Facebook page for Pier Health.

Header: Pier Health logo, navigation links (Home, Create, etc.), and user profile (Suzie).

Left Sidebar: Pier Health logo, navigation links (Home, Posts, Reviews, Photos, About, Community), and a "Create a Page" button.

Main Content Area:

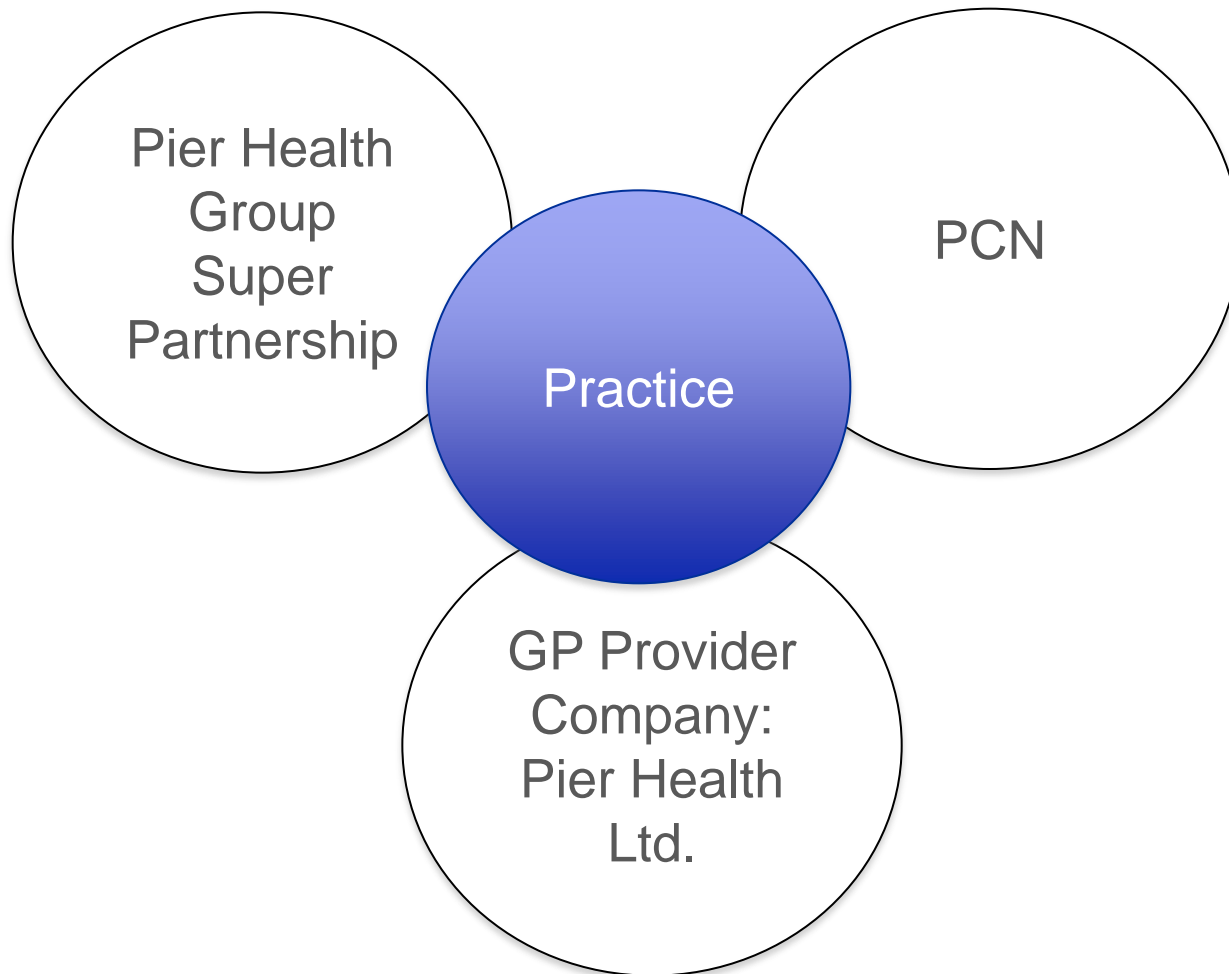
- Hero Image:** A collage of images showing healthcare professionals and patients, overlaid with large, colorful circles.
- Buttons:** Like, Follow, Share, Call Now, Send Message.
- About Section:**
 - CONTACT INFO:**
 - Call 01934 410557
 - m.me/112138000179502
 - info@pierhealth.co.uk
 - http://www.pierhealth.co.uk
 - Medical & Health
 - STORY:**
 - Our Story:**

In April 2018 the surgeries in Weston started talking about how we might work together to become more sustainable and resilient.

We wanted to find a way to keep doing what we do best ... providing our patients with great healthcare. We also wanted to find a way to embrace new ways of working, at a larger scale to meet the future needs of our patients;...



*Determined to lead,
determined to succeed...*



Building The Future



























How does this apply to us?





How does this apply to us?

- Nine Practices: The good, the bad & the ugly
- Town centre developments: New practice & services, social prescribing, catering...
- New out of town practice (10,000 new patients and climbing!)
- Only two practices currently fit for purpose
- Impact of technologies
- Impact of millennials
- Impact of self care
- Impact of longer lives, more complex needs
- Health and lifestyle village
- Joint venture? Property company?

Isn't it time to break the mould?



Contact:

nigel@openjunction.co.uk

07710 915934



HEALTHCARE KNOW HOW